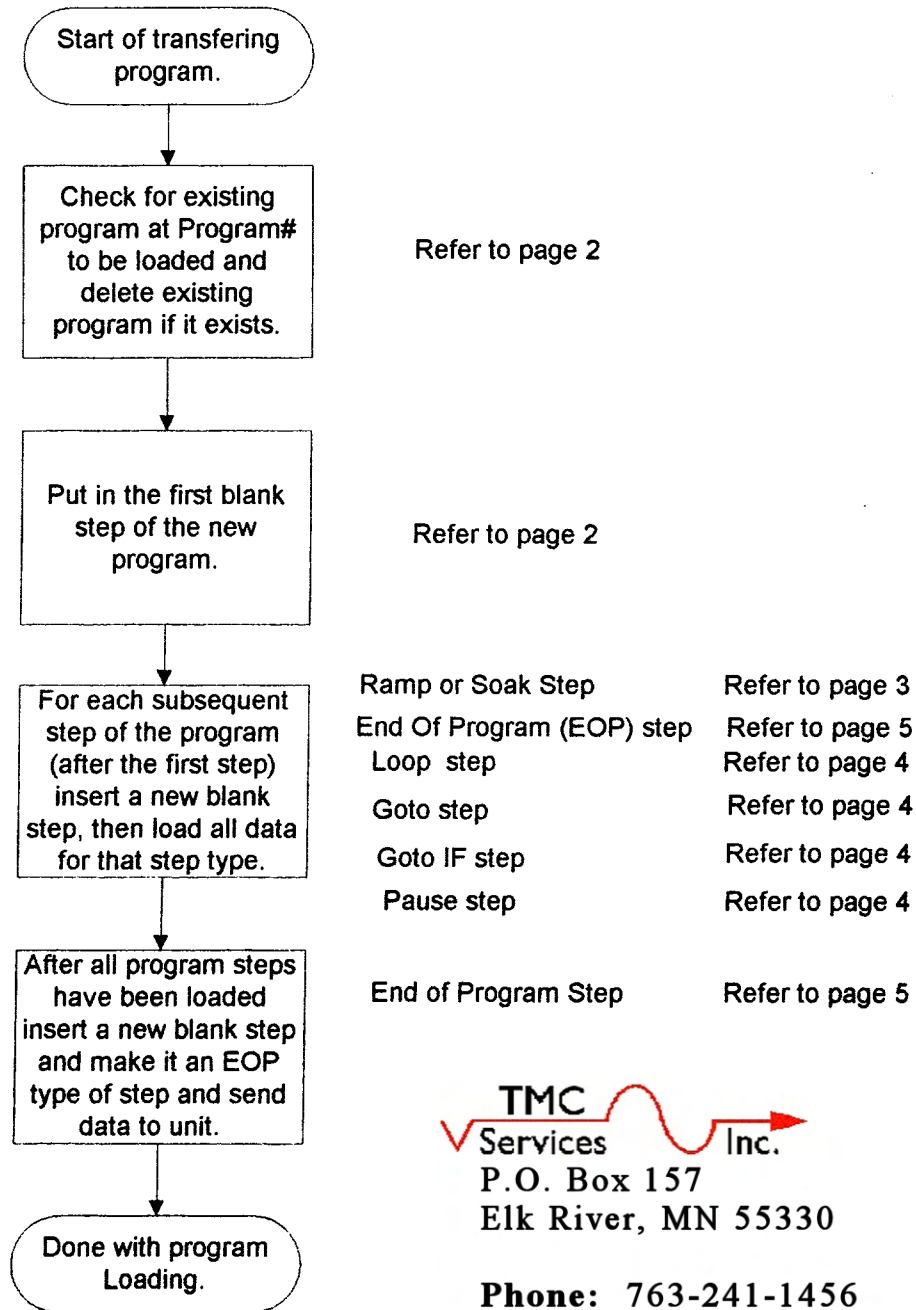


This assumes that the communication has been established between the computer and the 620/600.

The 620/600 must be in remote mode.

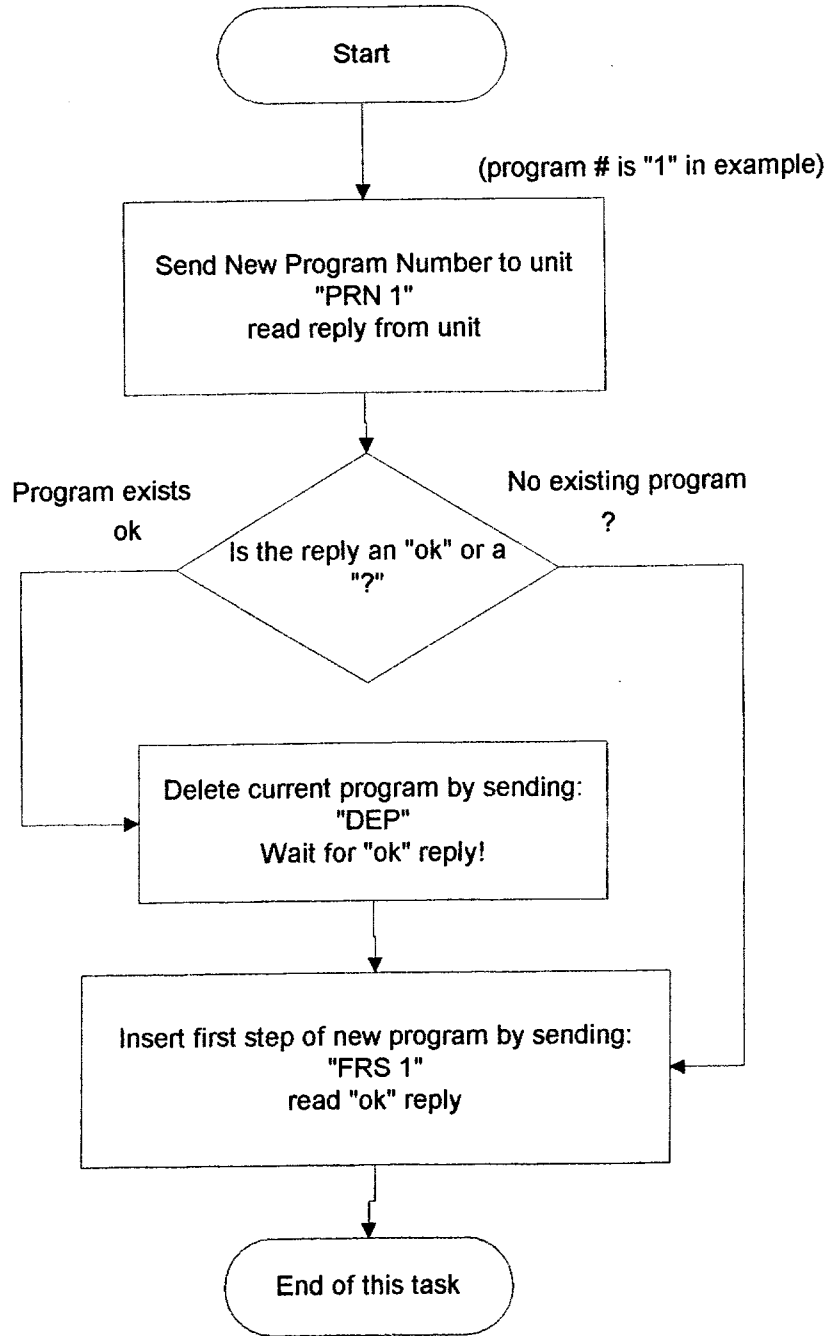
The task for sending a program to a unit can be represented by the following:

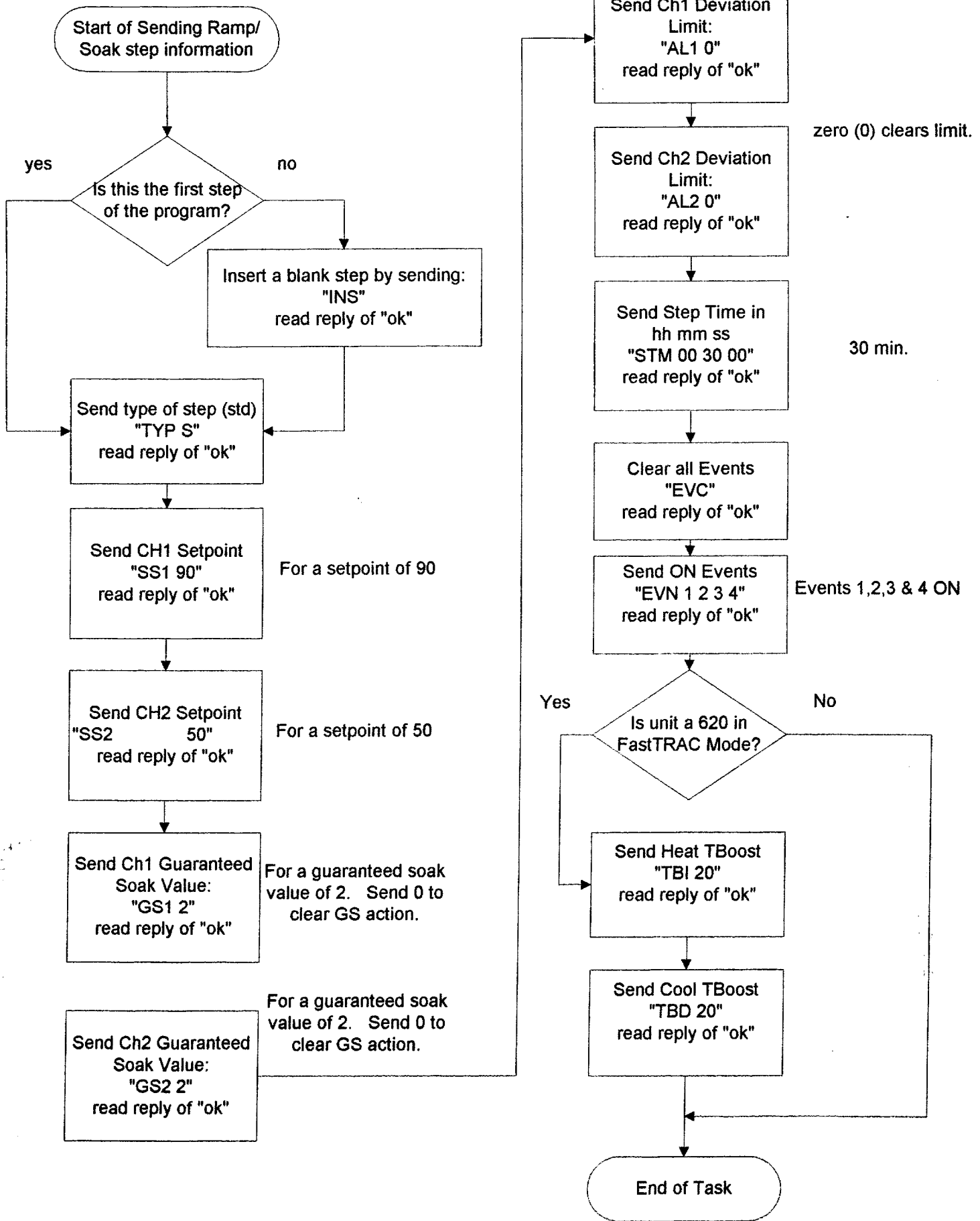


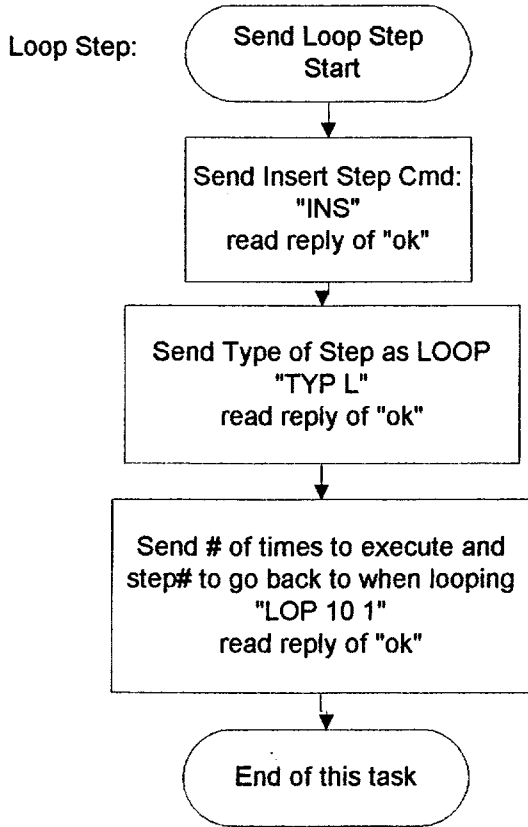
TMC
Services Inc.
P.O. Box 157
Elk River, MN 55330

Phone: 763-241-1456
Fax: 763-241-1829
Email: jcsystems@tmcservices.net
Web: www.jcsystemsinc.com

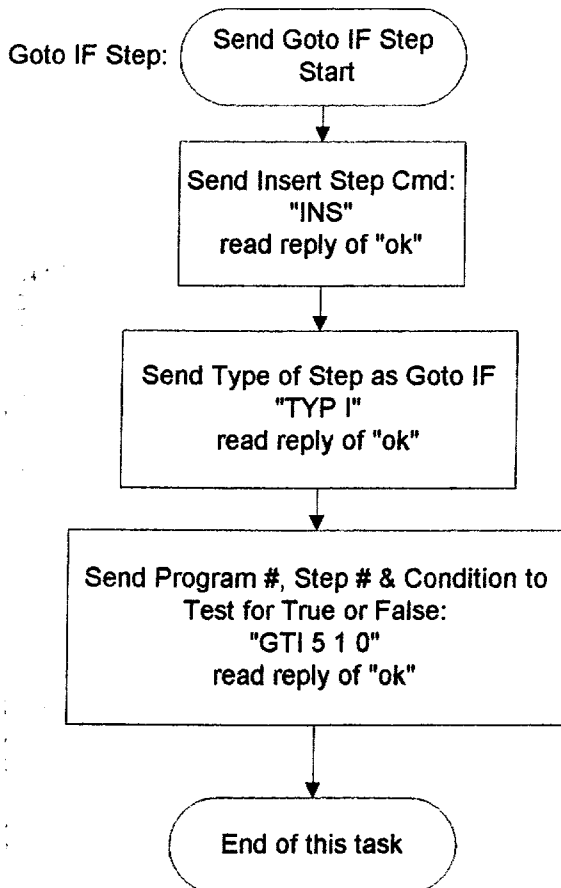
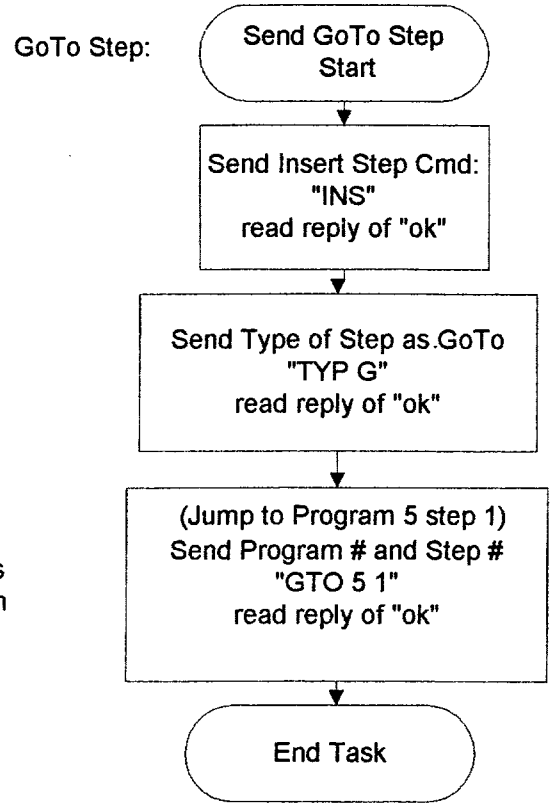
Note: Take a look at page 6 for timeout and delay time suggestions!



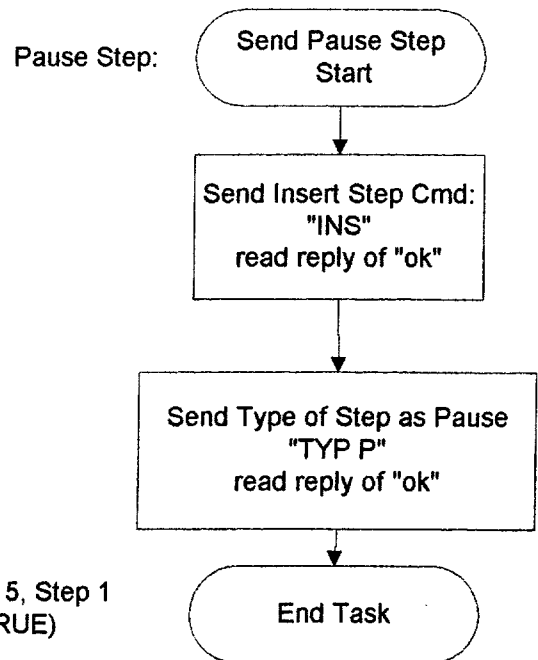


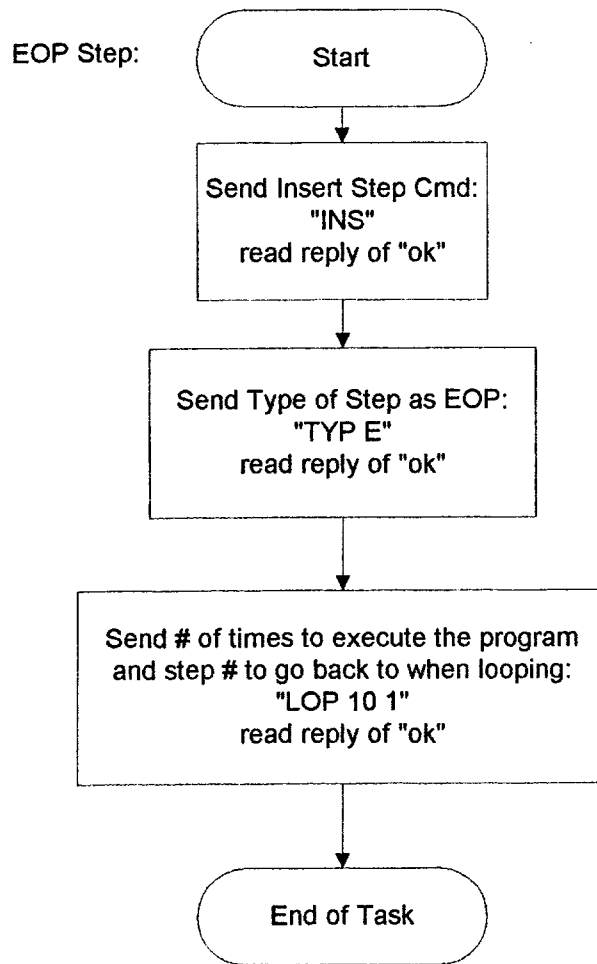


(Execute steps 1 to this loop step ten times then go to the next step)



(Jump to Program # 5, Step 1 If Input # 4 is TRUE)





Use 5 second timeouts
when sending
commands or reading
a query.

Wait 50 ms. after
sending a command
before trying to read
the reply.

Use a 15 to 20 second
timeout after sending
the "DEP" delete
program command.

You must read a reply after every
command or query sent to the unit.
(Only one exception - Sending the
address command to the unit via the
serial port)
In this case, no reply is generated.
You should wait 200 ms. after sending
a serial address command before
communicating with the selected unit.